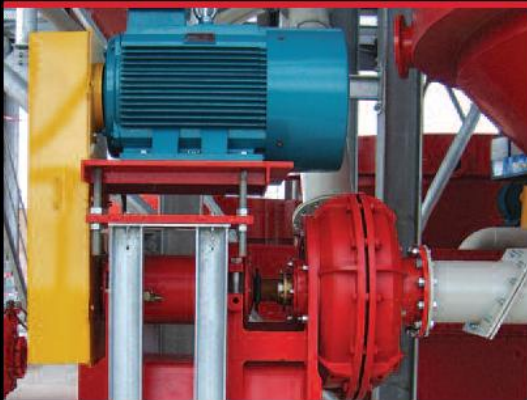


SLURRY PUMPS



RELIABLE AND LONG LASTING

EUROGOMMA's centrifugal Slurry Pumps are rubber-lined and abrasion resistant for long lasting service, low lifetime costs and straight forward servicing.

Eight models with discharge port sizes from 35mm to 250mm that can accommodate various options in lining material and gland type choices.



EUROGOMMA

APPLICATIONS

- Sand & Gravel / Minerals Processing
- Soil Washing / Remediation
- Waste Water Recovery / Disposal
- Concrete Wash-out



WETTED PARTS

Standard pumps are equipped with natural rubber liners and impeller. However, bespoke options are available to suit a specific process and include premium natural rubber, Nitrile and food grade rubber. Shaft sleeves are from 304 St, but may be manufactured from other materials or coated to special order.

GLAND OPTIONS

D (Dry) Gland

An abrasion resistant Natural Rubber “Face Seal” riding a “Hard Face” and lubricated naturally by the process fluid. Controlled seepage of process fluid. Optional clean water injection facility.

H (Hydro) Gland

Clean water is injected into the inter-space between a pair of gland seals in tandem. Slight dilution – but total containment – of the process fluid. Controlled water seepage to atmosphere.

P (Packed) Gland

Gland packing mechanically adjusted to “ride” the shaft sleeve. Highest pressure capability. Some process dilution and water (or lubricating grease) seepage to atmosphere.

MOTOR AND DRIVE

EUROGOMMA supplies pumps bare-shaft or complete with motor, overhead mounting platform, vee-belt drive and guard. Motors can also be oriented in Z-vee fashion, or side mounted on slide rails

