

EUROGOMMA

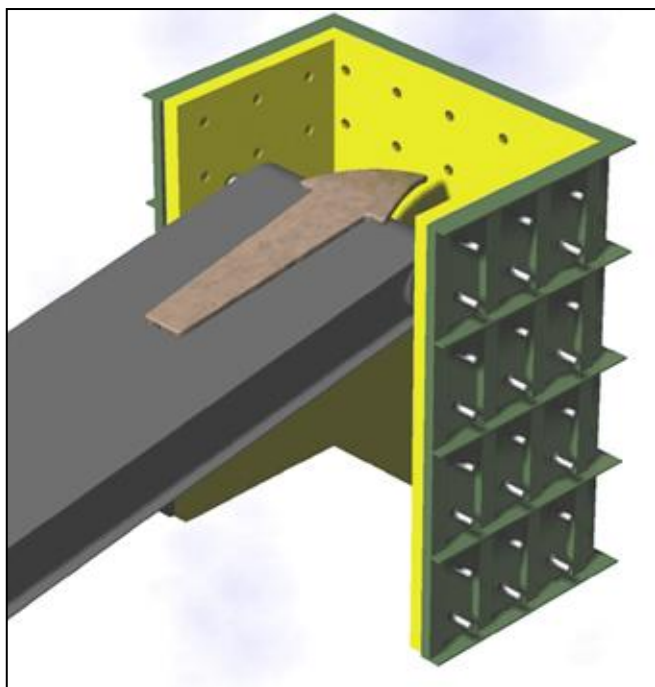
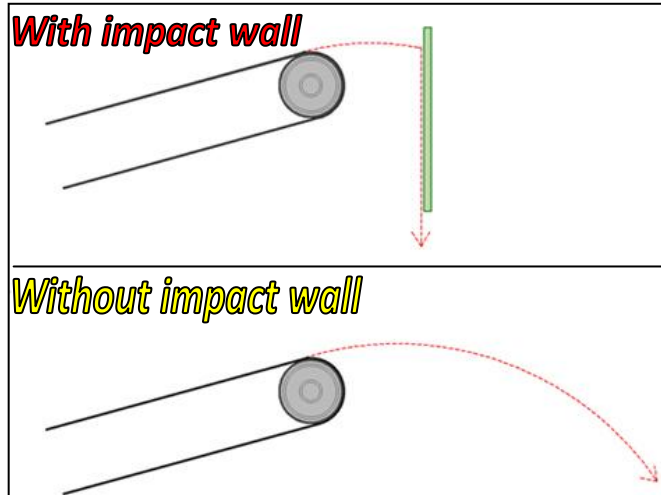
Conveyor belt protection Polyurethane lining pads for transfer chutes

Material at discharge of conveyor belts is often forced to drop down with the usage of transfer chutes. In fact the usage of transfer chutes offers two significant advantages:

1. It permits to exactly calculate the place of stocking of material
2. It drastically reduces the dropping space

Of course this is a smart solution but it is understood that the constant impacting of the material on the chute causes relevant wearing.

That is why it is very important to protect chutes with an elastic and highly abrasion resistant material.



It is proven that our **SUPERELASTIC** polyurethane offers very high performance both in impact and abrasion resistance being a superior product to every metal, rubber, ceramic, polyethylene and standard urethane.



For this reason the application of our **SUPERELASTIC** impact pads on transfer chutes is terribly cost-effective and definitely reduces maintenance in these areas.

Our **SUPERELASTIC** impact pads are all made of a metal back with a thickness range raising from 3 to 10mm and an elastic urethane lining.

Available dimensions are 150x500mm;
250x500mm; 300x500mm and 500x500 mm.
Available thickness raises from 30 to 120 mm.

